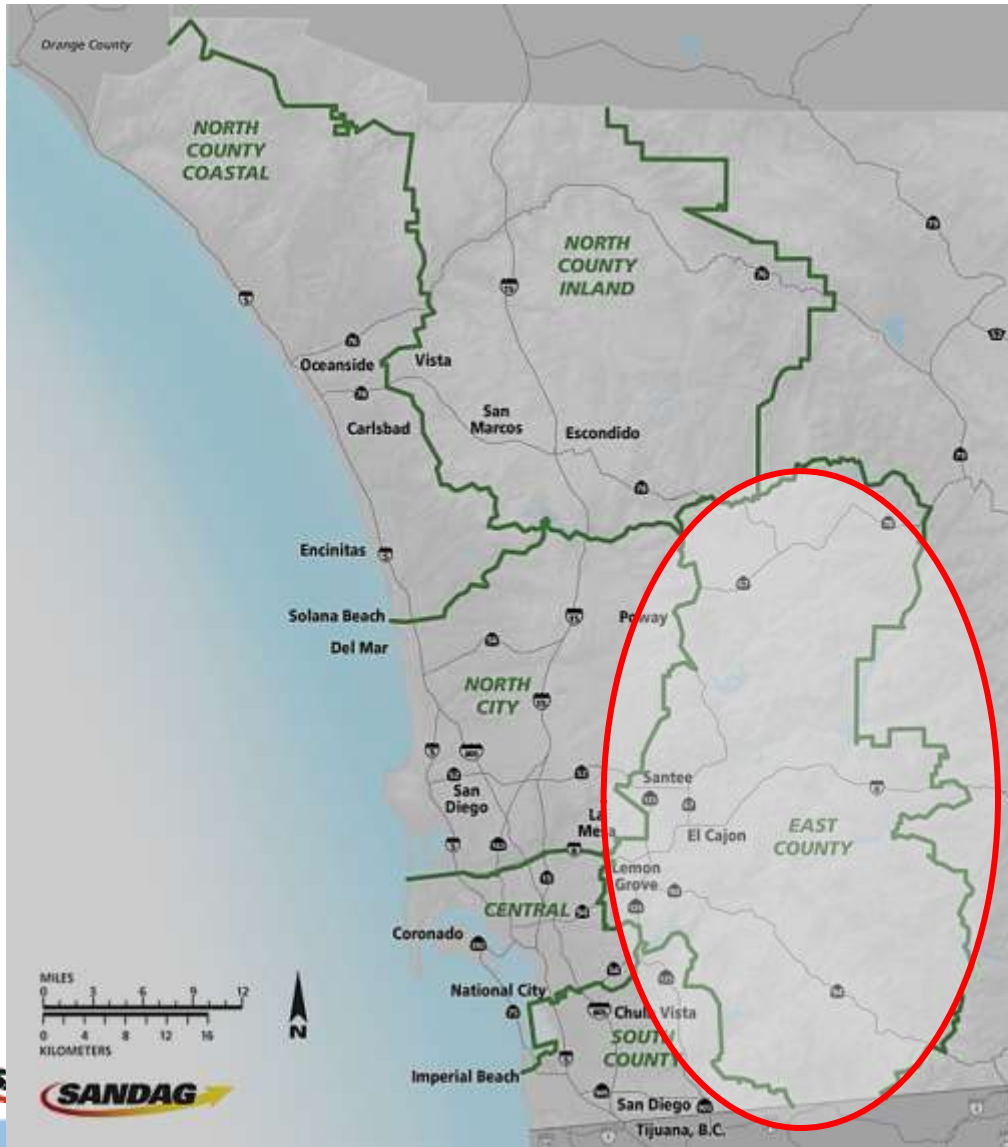


East County

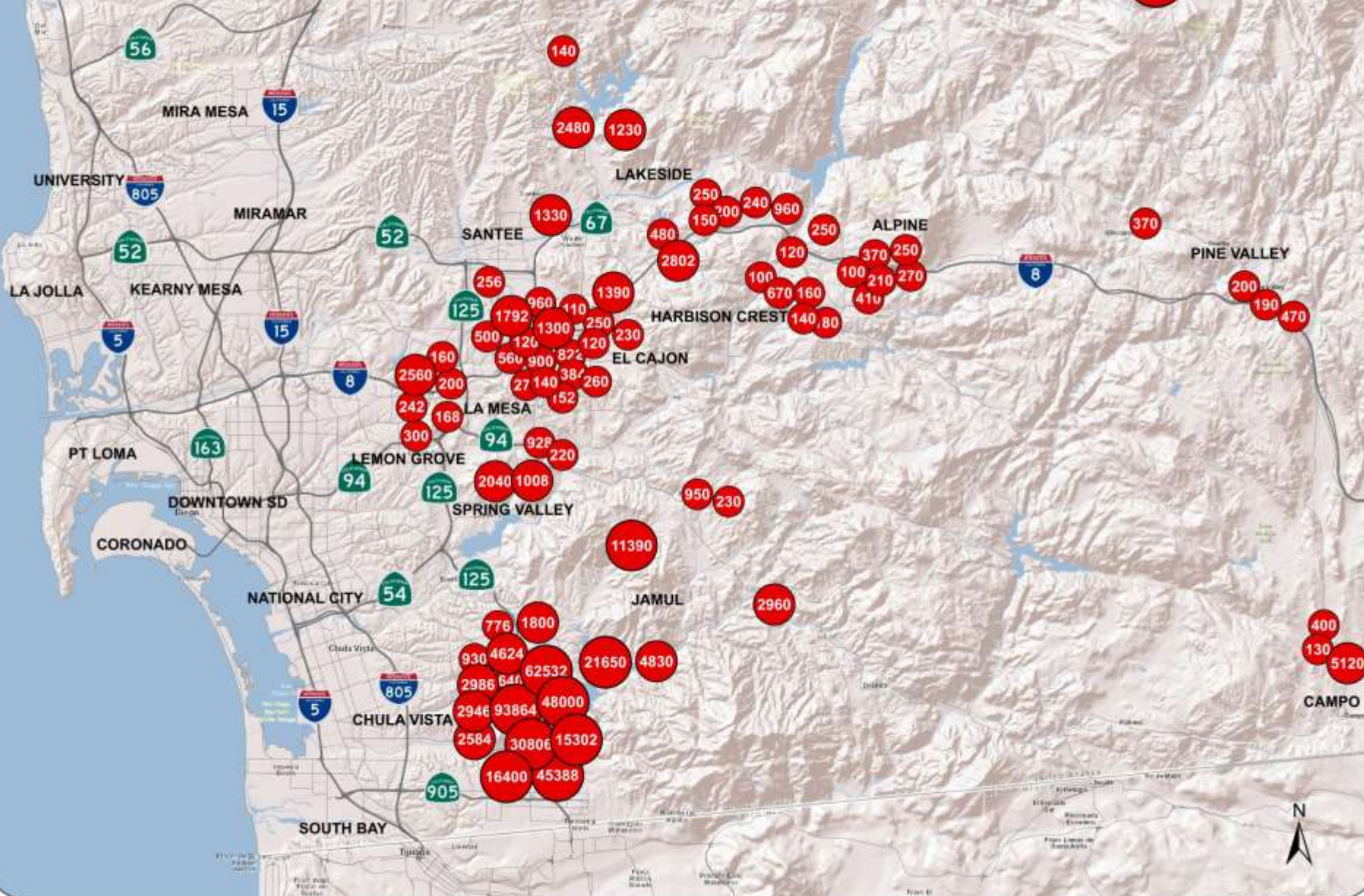


- El Cajon
- Santee
- La Mesa
- Lemon Grove
- Unincorporated

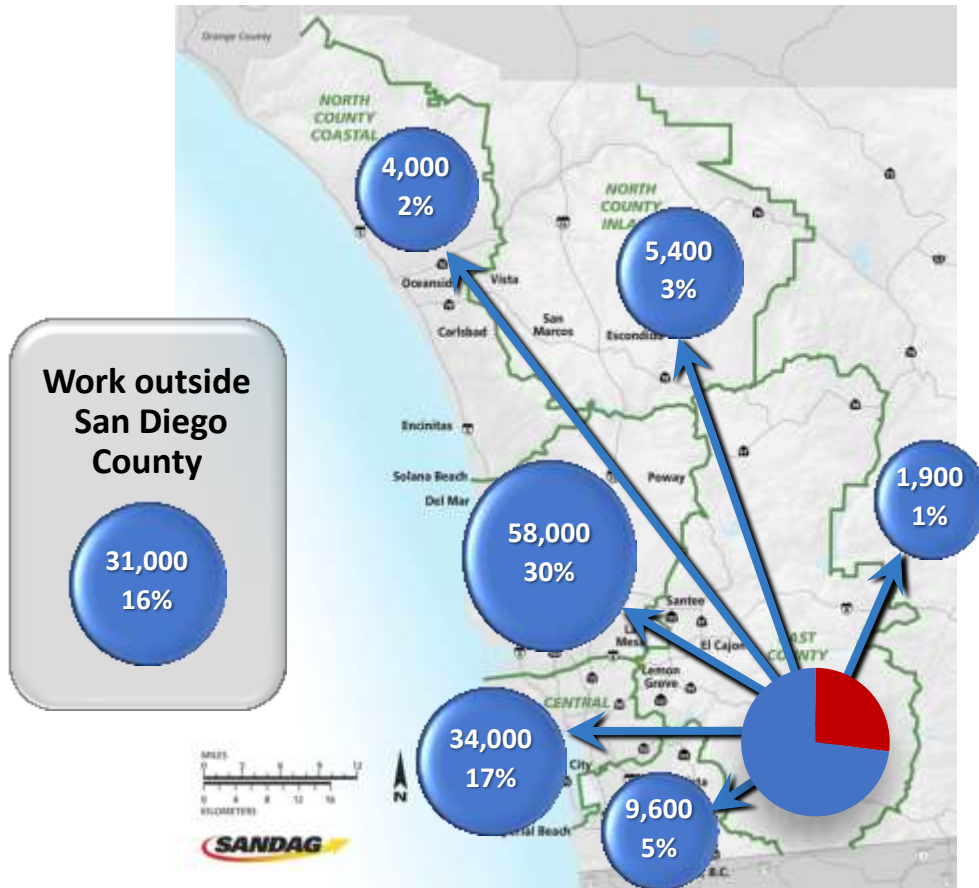
About half (48%) of the people in East Suburban MSA live in one of the four incorporated cities.

Inland - East County Developments

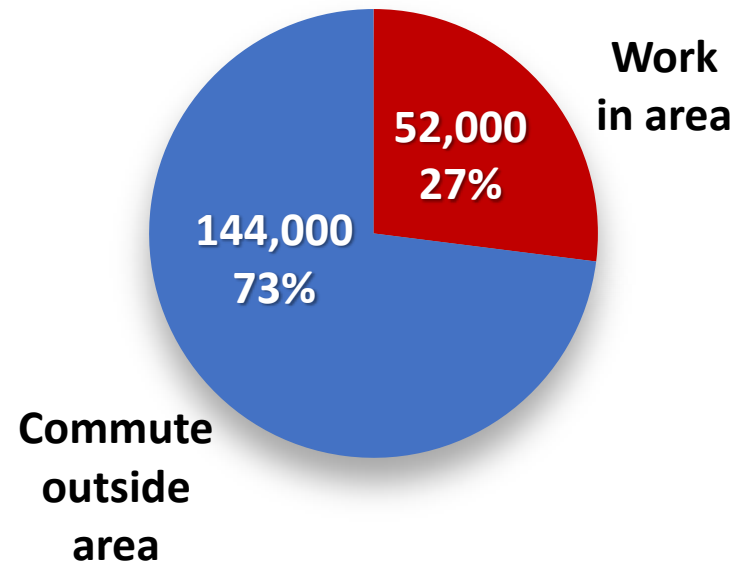
Entitled & Proposed Projects by Average Daily Vehicle Trips **ADT**



East County, where we work*

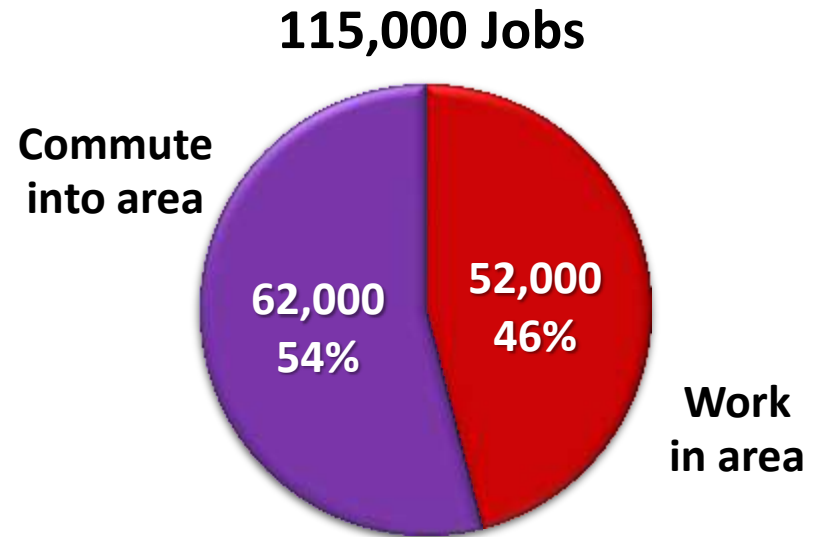
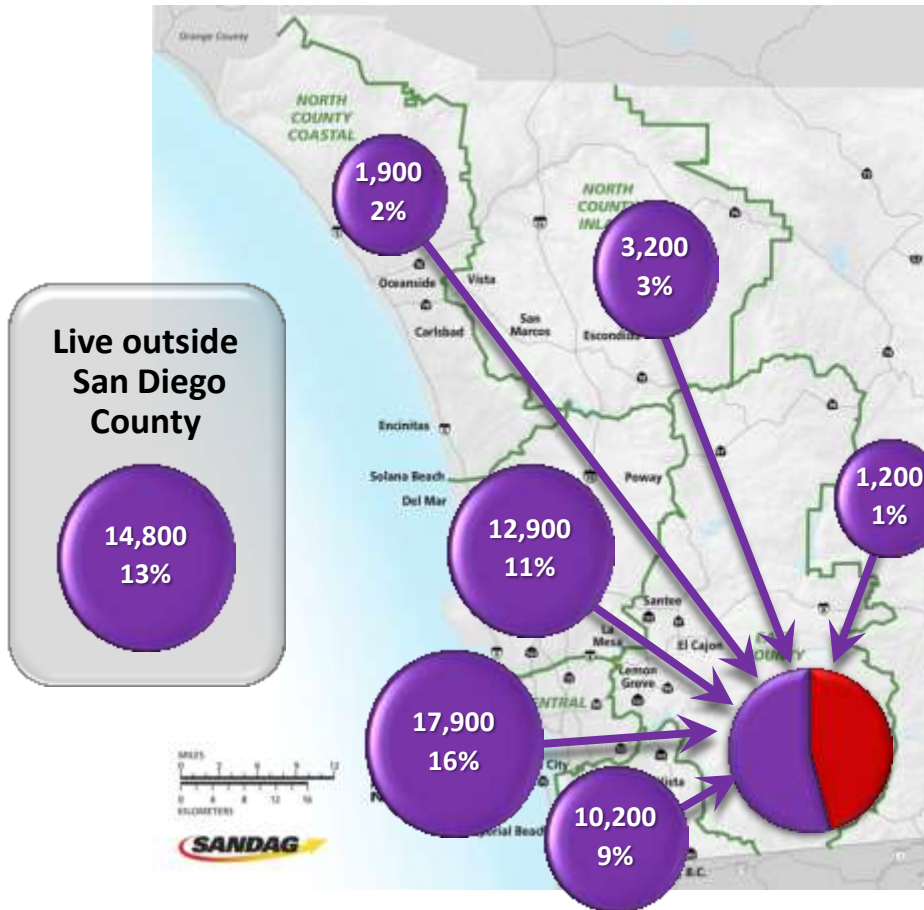


196,000 Resident Workers



* Primary job

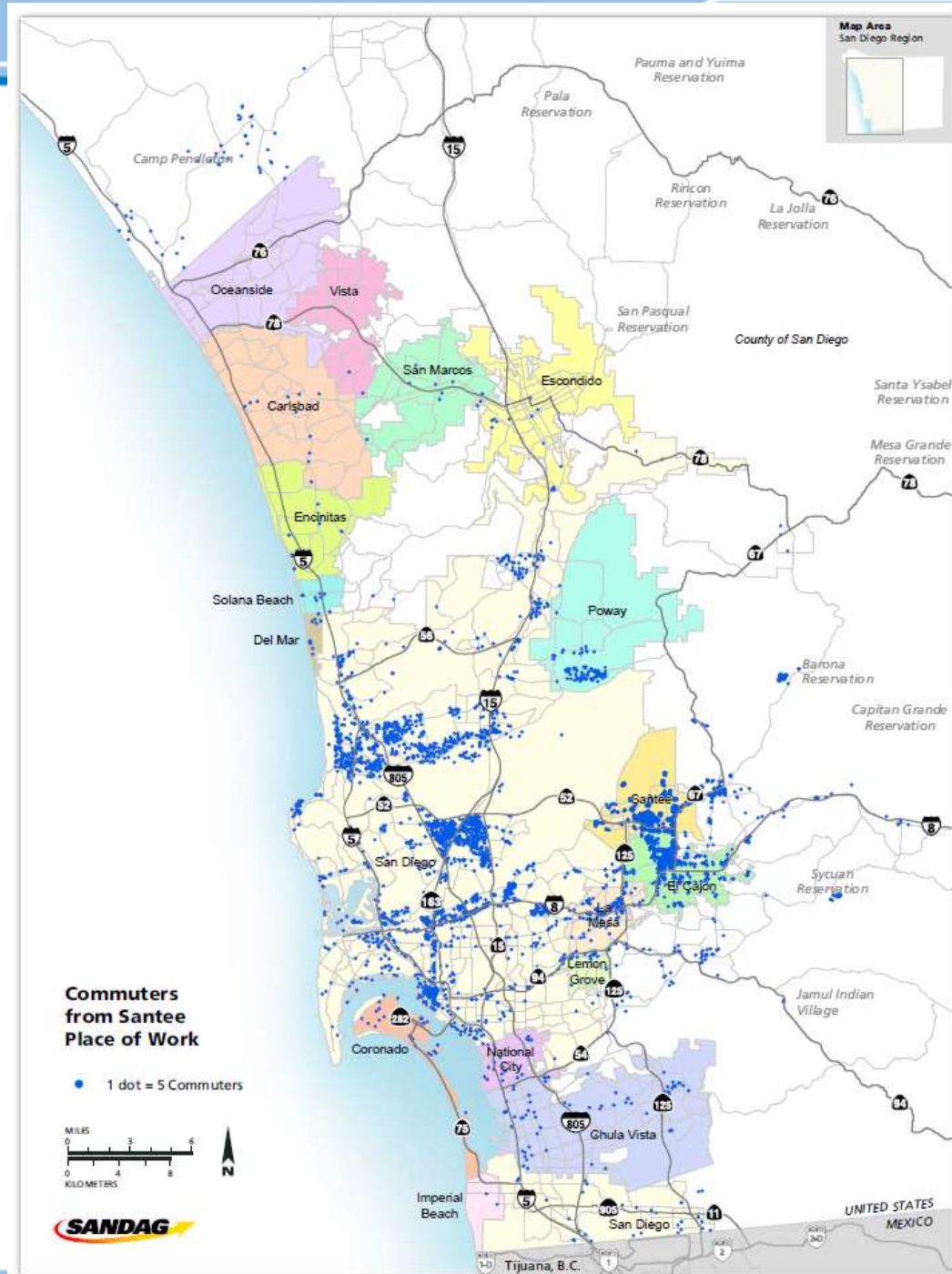
East County, who we employ*



* Primary job

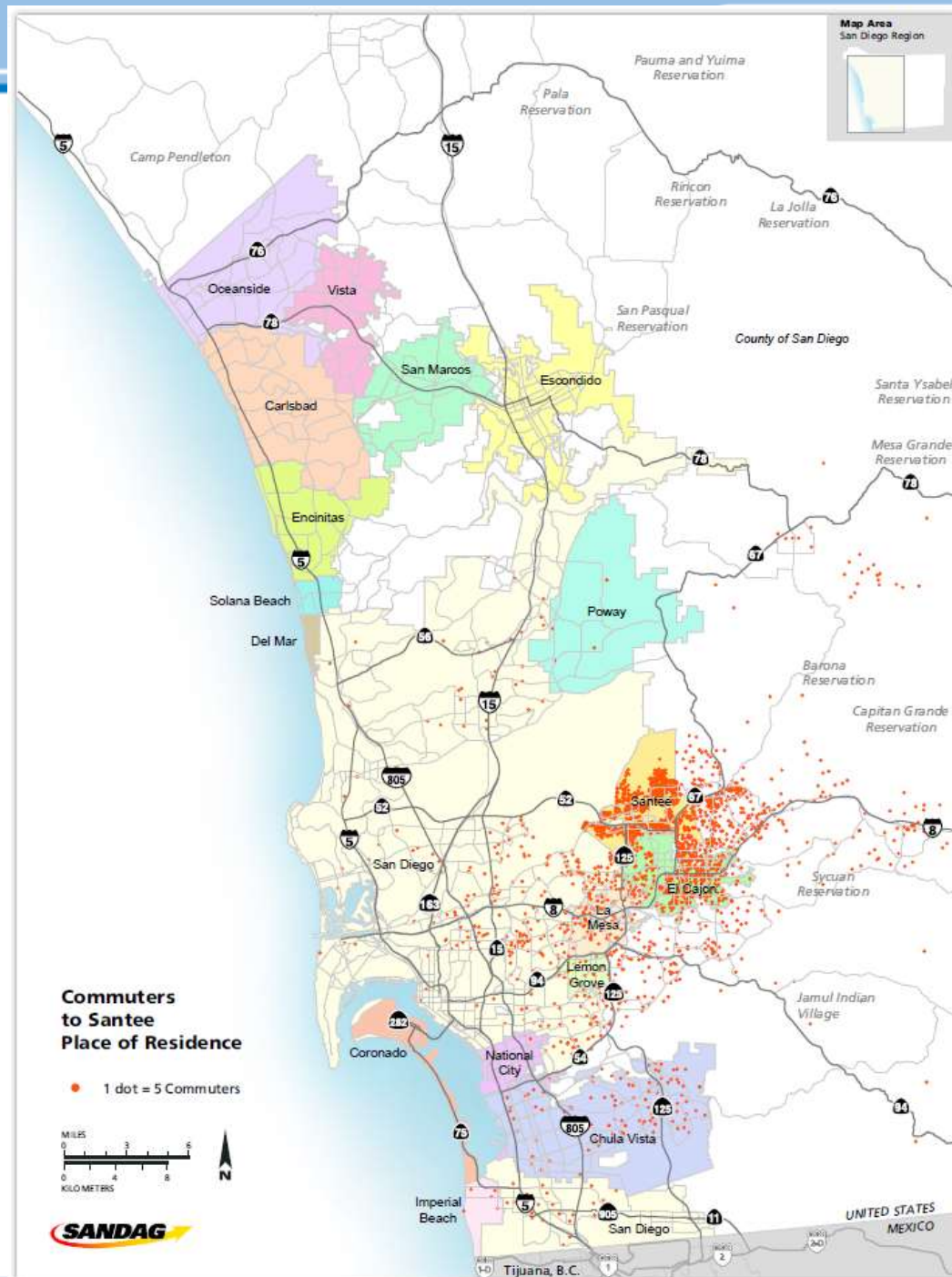
Where People from Santee Work

Of the **~26,900** employed residents of Santee, **6%** work within the Jurisdiction, and **94%** commute outside Santee for work.

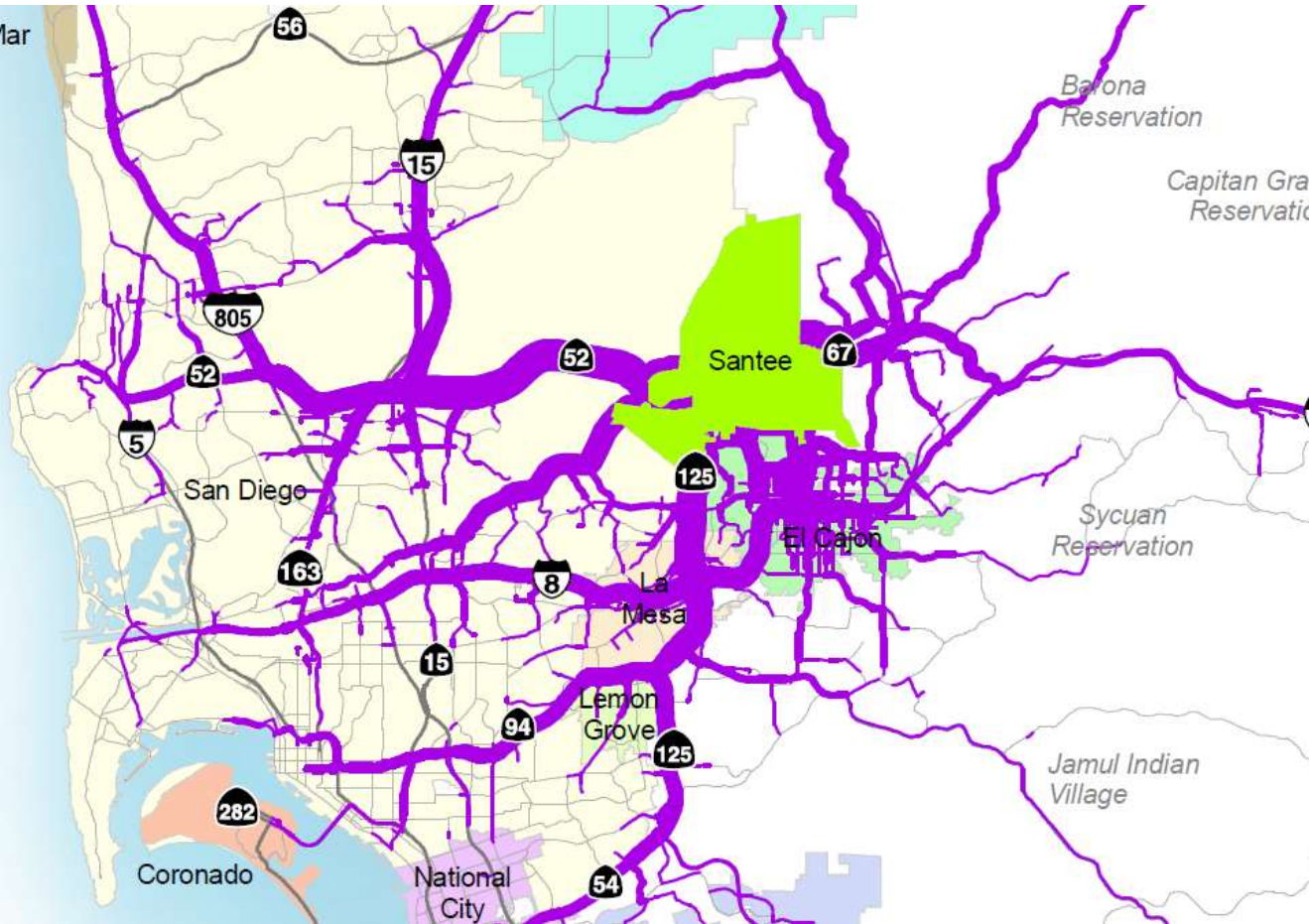


Where People who work in Santee Live

Of the **~13,800** who work in Santee, **12%** live within the Jurisdiction, and **88%** live outside Santee for work.



VMT associated with Santee



21% of vehicle miles traveled (VMT) associated with Santee occurs within the city,
79% of VMT occurs outside Santee.



Roadway Improvement



Legend:
AUX = Auxiliary, EB = Eastbound
Fwy = Freeway, GP = General Purpose
ML = Managed Lane, NB = Northbound
System Management, WB = Westbound

